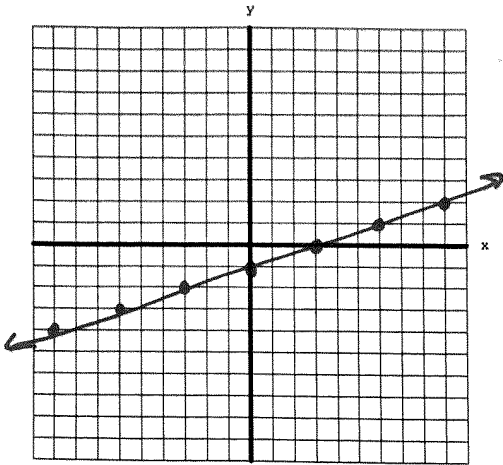
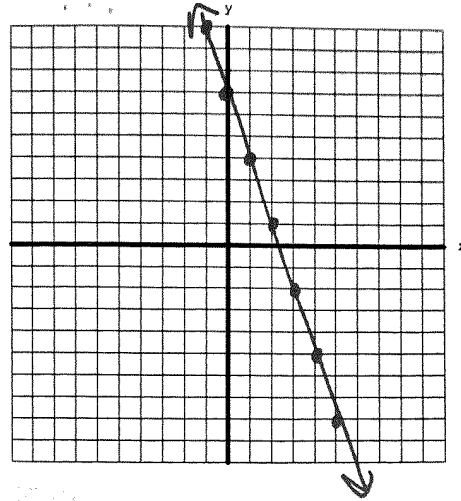


Graph.

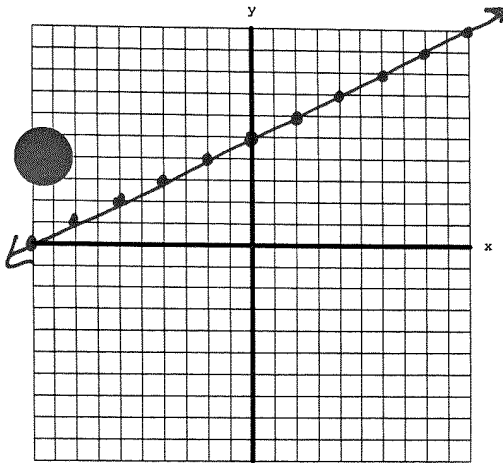
1. $2x - 6y = 6$



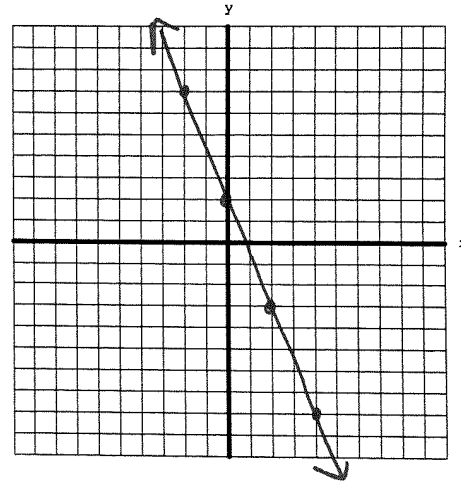
2. $-3x - y = -7$



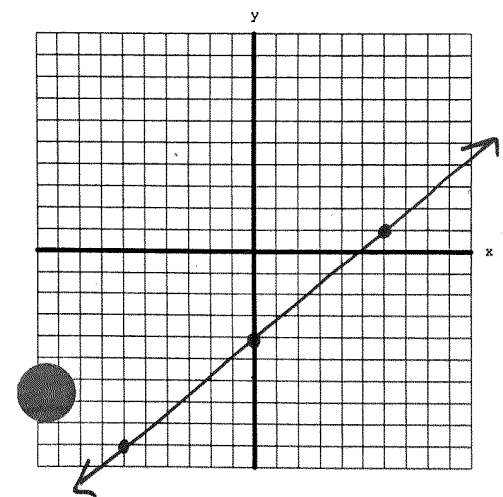
3. $2y - x = 10$



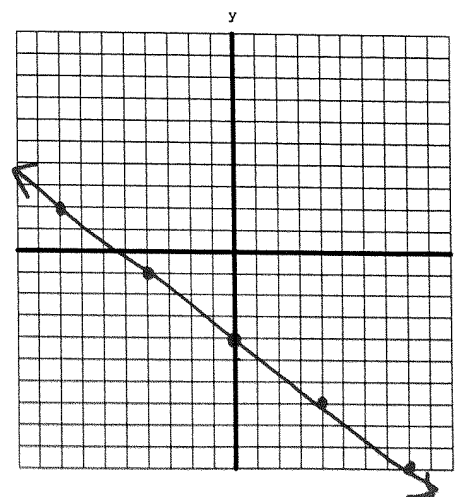
4. $5x + 2y = 4$



5. $5x - 6y = 24$



6. $-4y - 3x = 16$



7. Mr. Sacco decided he needs to save more money. He started a savings account towards the beginning of the school year. He had an initial deposit and has been putting the same amount in the account each week. After 4 weeks he had \$405 and \$931 after 12 weeks.

- Write an equation to represent the situation.
- How much was the initial deposit? $\$142$
- How many weeks will it take for Mr. Sacco to save \$5000? 74 weeks

8. To pay for grad school, Mr. Belby walks dogs on the weekends. He gets a flat rate from the company and \$9 per dog from the owner. This past weekend he earned \$98 for walking 7 dogs.

- Write an equation to represent the situation.
- How much does the company pay him? $\$35$
- How much would he earn if he doubled the number of dogs he walked? $\$161$

9. Mrs. Pischke is going on vacation over Thanksgiving break to hike up to Hawkeye Point. She starts from the conservation building and after 20 minutes she is at an altitude of 934 feet. 45 minutes after she started she is at 2064 feet.

- Write an equation to represent the situation.
- How long will it take her to reach the top at 4189 feet? 93 min

10.

- Write an equation of a line given: $m = 2$ and the line goes through the point $(18,40)$. $y = 2x + 4$
- Write a word problem whose situation could be modeled by your equation. \leftarrow answers may vary ask teacher to check