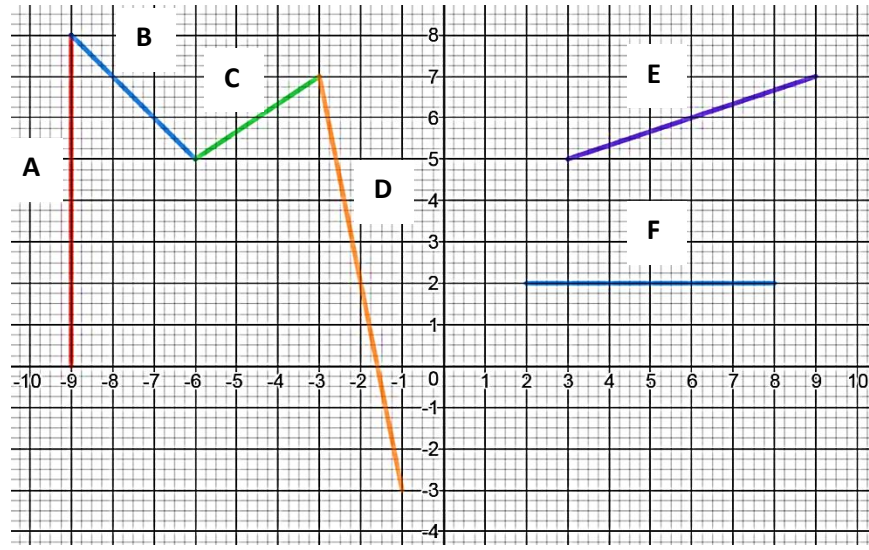


Slope and Slope-Intercept Equations Practice



1. Find the slope for each line by choosing two ordered pairs on the line

A =

B =

C =

D =

E =

F =

2. Write the equation for each line using your answers to #1 with an ordered pair

Equation A:

Equation B:

Equation C:

Equation D:

Equation E:

Equation F:

3. Determine whether or not each relation is a function. If it isn't, explain why. Then find the domain and range for each and write it using interval notation.

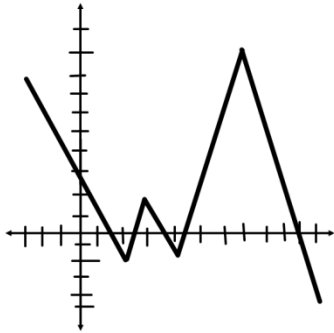
a. $\{(3,2), (1, -1), (2, -4), (3, -9), (4, -16)\}$

Function? Y or N

Domain: _____

Range: _____

b.

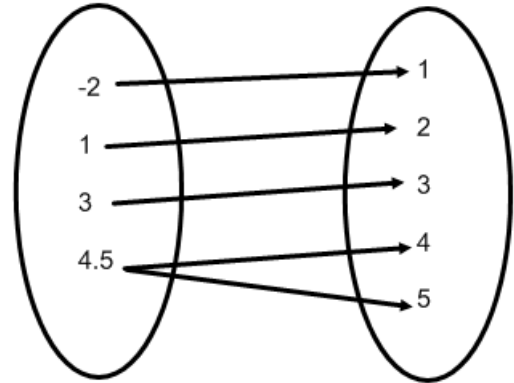


Function? Y or N

Domain: _____

Range: _____

c.



Function? Y or N

Domain: _____

Range: _____

4. Evaluate the following expressions given the functions below.

$f(x) = 14x - 3$

$g(x) = \frac{1}{2}x + 5$

$p(x) = x^2 + 8$

$q(x) = 3x^2 - 8$

$f(2) =$

$f(-9) =$

$g(6) =$

$g(-8) =$

$p(-5) =$

$q(5) =$

find x if $f(x) = 95$

find x if $g(x) = 7$

find x if $p(x) = 33$

