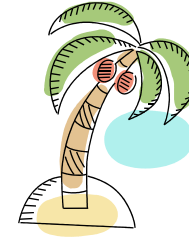


Solve using the conversion factors that are listed in the table below. Show all work for credit!



1. Your cruise ship is leaving for a 610-league adventure. How many nautical miles is this?

2. Later the ship is discovered at 38 fathoms deep under water. Convert this to yards.

3. Fortunately you survived! You are stranded on a deserted island.
If you are rationed to 32 gills of fresh water a day, how many gallons is this?

Length	Volume
1 nautical mile=6076 feet	4 gills=1 pint
1 inch=2.54cm	2 pints=1 quart
1 league=5280 yards	1liter=1.0567 quarts
1 cable=120 fathoms	1 bushel=4 pecks=32 quarts
1 fathom=6 feet	1 gallon= 4 quarts
1 degree=70 miles	
1 mile=5280 feet	
1 hand=4 inches	
1 yard= 3 feet	
1 meter=3.3 feet	

4. To reach the top of a palm tree for a coconut you will have to climb 7.4 meters. How many hands is this?

5. The island is rich with hot chile peppers. You can collect 1.6 pecks a day. How many liters could you collect in one week?